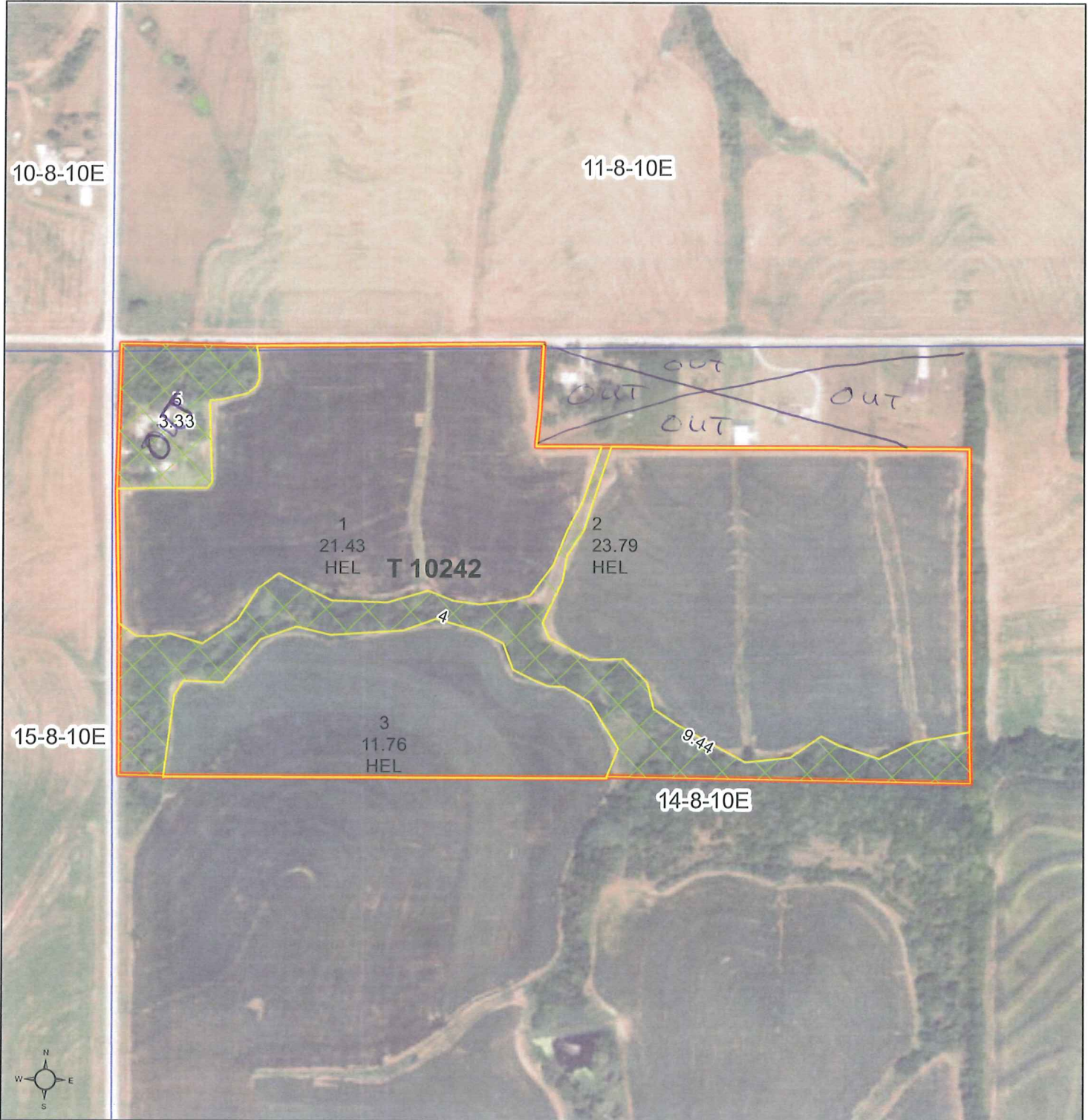




United States
Department of
Agriculture

Farm 3237
Tract 10242



- Common Land Unit**
- Cropland
 - Non-cropland
 - Conservation Reserve Program
- Wetland Determination Identifiers**
- Restricted Use
 - Limited Restrictions
 - Exempt from Conservation Compliance Provisions
- Compliance Provisions**
- Tract Boundary
 - Section Line

Farm Service Agency

Otoe County, Nebraska

2012 NAIP Imagery

2014 Program Year

Map Created October 23, 2013

1 inch = 414 feet

United States Department of Agriculture (USDA) Farm Service Agency (FSA) maps are for FSA Program administration only. This map does not represent a legal survey or reflect actual ownership; rather it depicts the information provided directly from the producer and/or National Agricultural Imagery Program (NAIP) imagery. The producer accepts the data 'as is' and assumes all risks associated with its use. USDA-FSA assumes no responsibility for actual or consequential damage incurred as a result of any user's reliance on this data outside FSA Programs. Wetland identifiers do not represent the size, shape, or specific determination of the area. Refer to your original determination (CPA-026 and attached maps) for exact boundaries and determinations or contact USDA Natural Resources Conservation Service (NRCS).



United States
Department of
Agriculture

Farm 3237
Tract 10241



- Common Land Unit**
- Cropland
 - Non-cropland
 - Conservation Reserve Program
- Wetland Determination Identifiers**
- Restricted Use
 - Limited Restrictions
 - Exempt from Conservation Compliance Provisions
- Compliance Provisions**
- Tract Boundary
 - Section Line

Farm Service Agency

Otoe County, Nebraska

2012 NAIP Imagery

2014 Program Year

Map Created October 23, 2013

1 inch = 415 feet

United States Department of Agriculture (USDA) Farm Service Agency (FSA) maps are for FSA Program administration only. This map does not represent a legal survey or reflect actual ownership; rather it depicts the information provided directly from the producer and/or National Agricultural Imagery Program (NAIP) imagery. The producer accepts the data 'as is' and assumes all risks associated with its use. USDA-FSA assumes no responsibility for actual or consequential damage incurred as a result of any user's reliance on this data outside FSA Programs. Wetland identifiers do not represent the size, shape, or specific determination of the area. Refer to your original determination (CPA-026 and attached maps) for exact boundaries and determinations or contact USDA Natural Resources Conservation Service (NRCS).